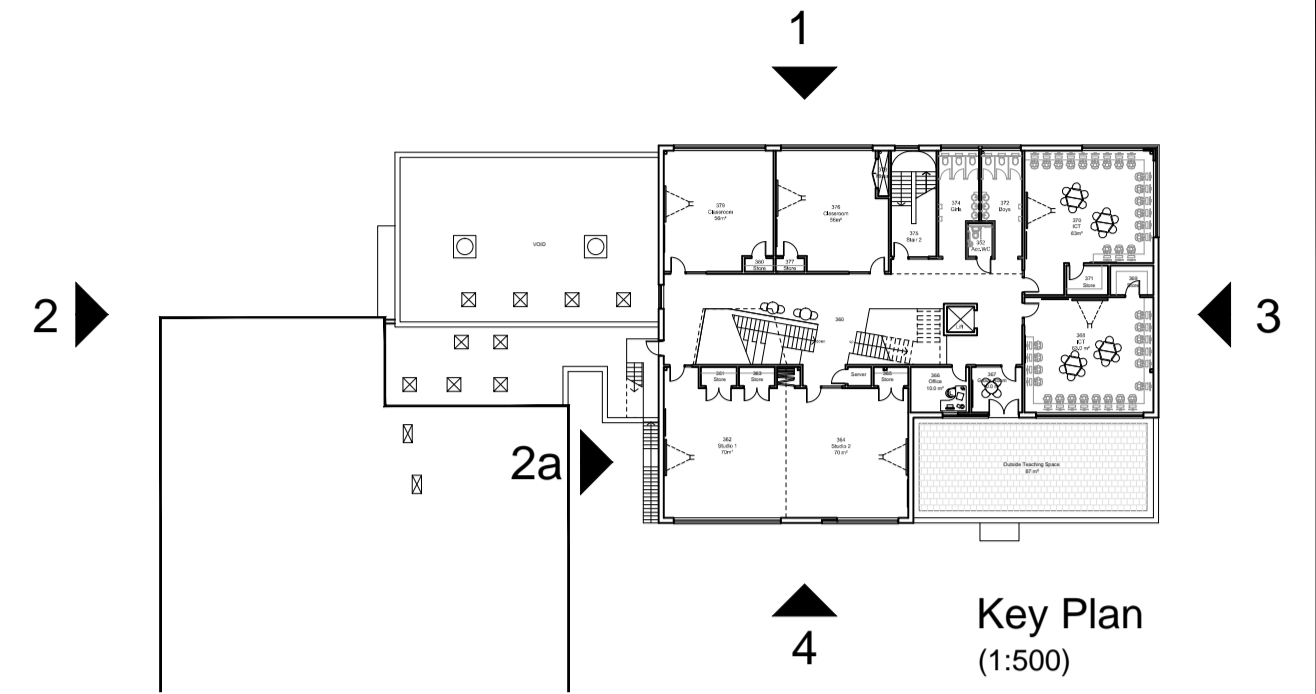
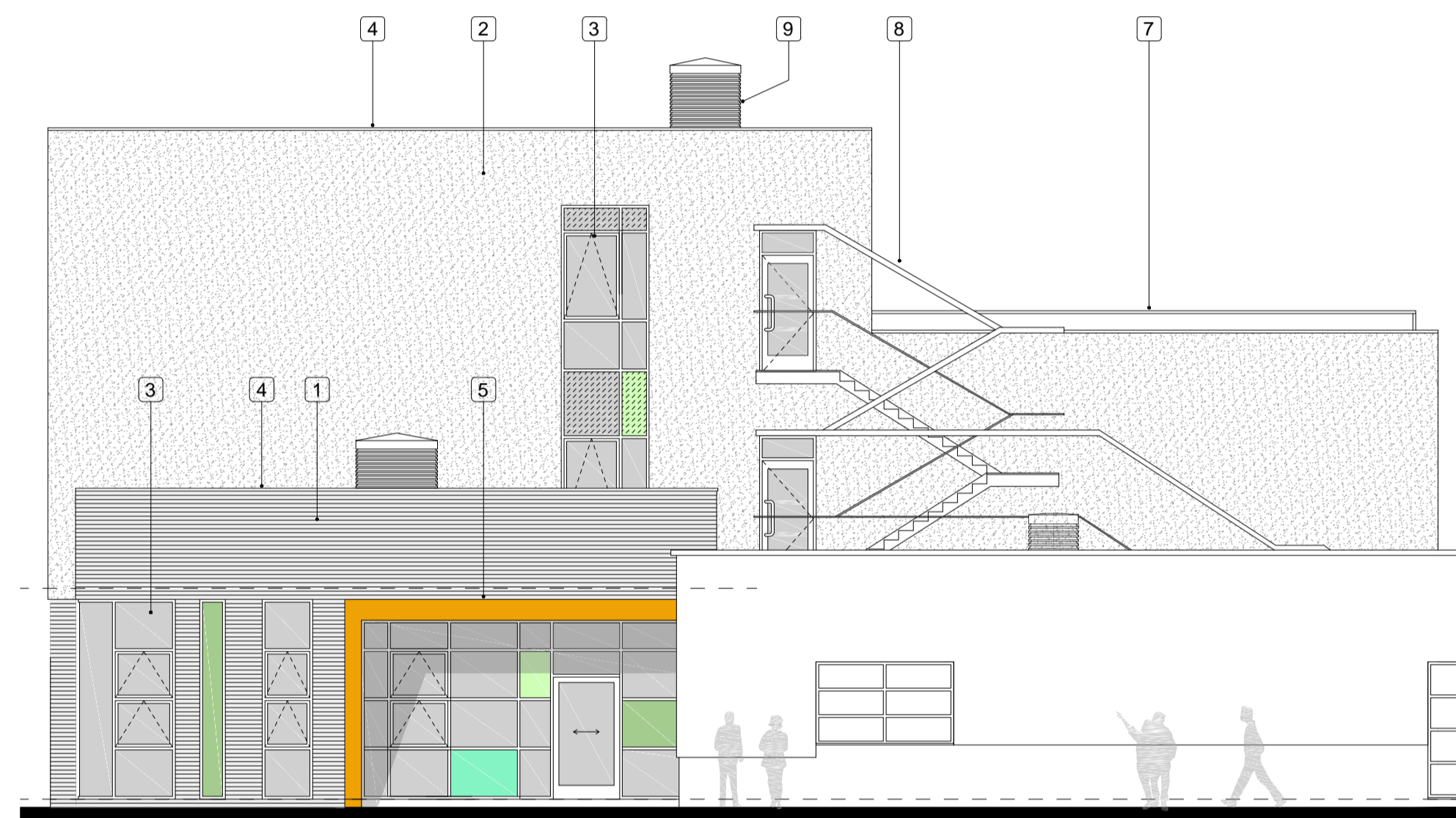


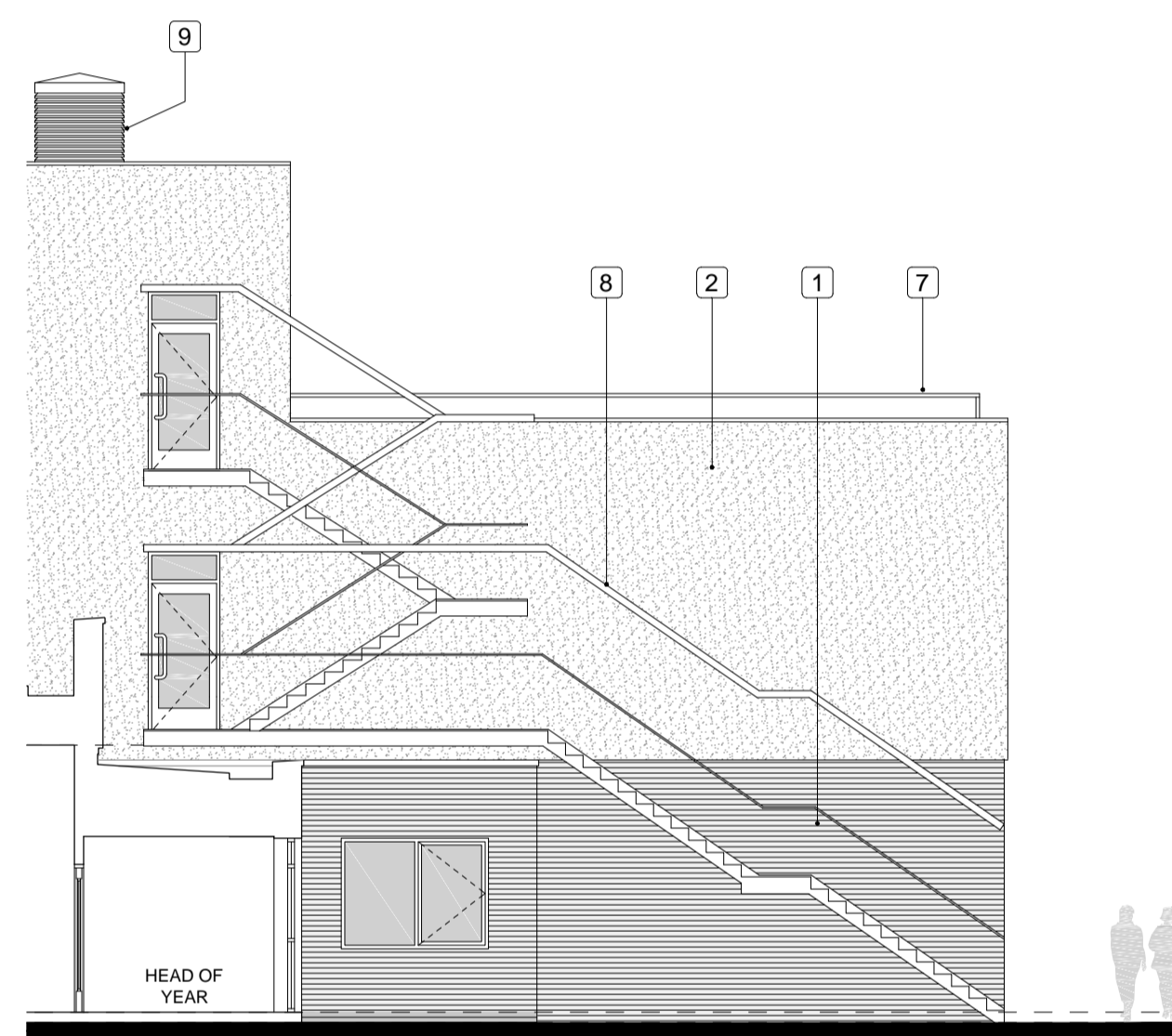
1 North Elevation (1:100)



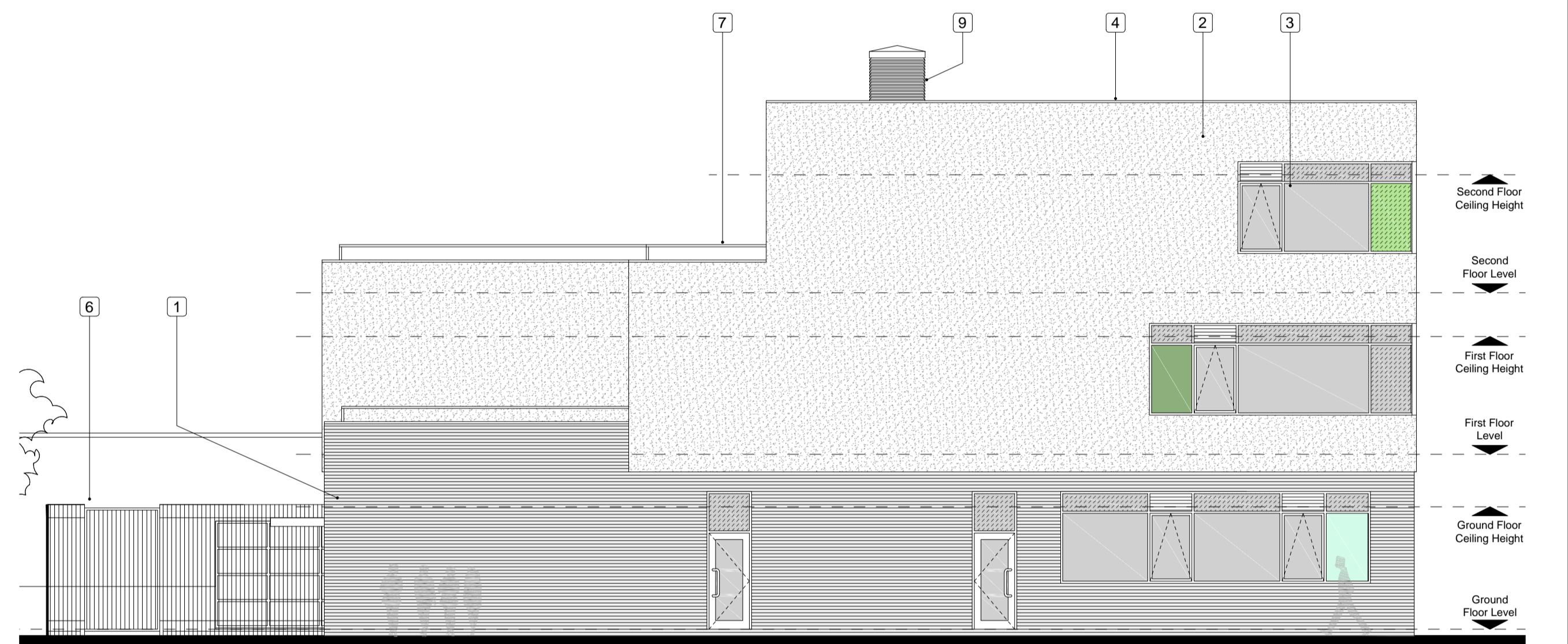
Key Plan (1:500)



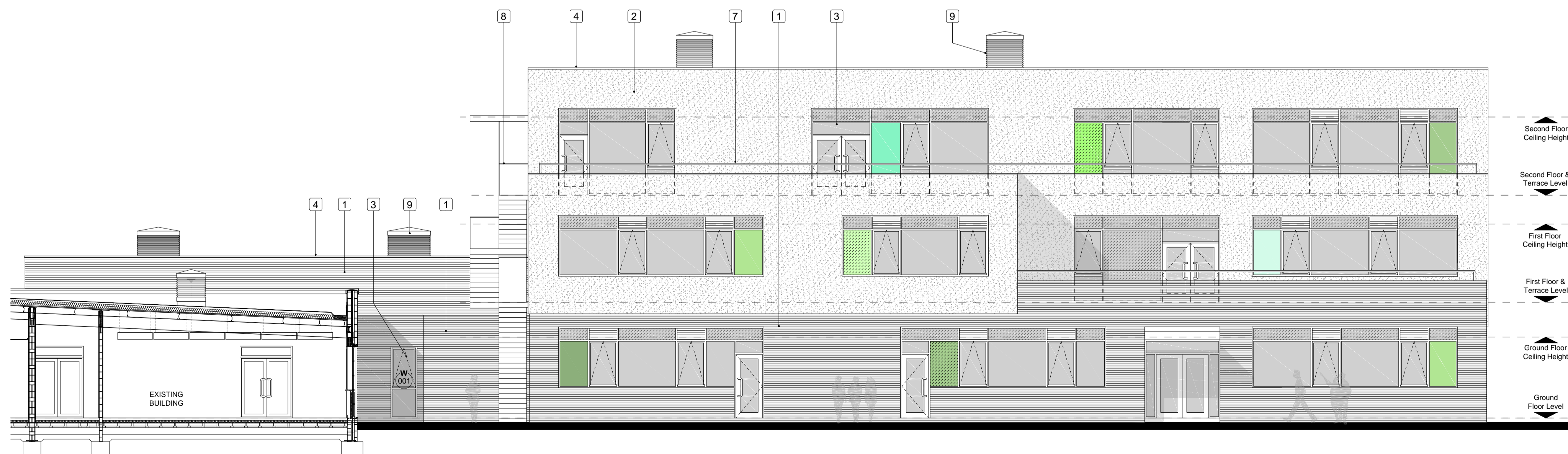
2 West Elevation (1:100)



2a West Elevation. Fire escape staircase detail (1:100)



3 East Elevation (1:100)



4 South Elevation (1:100)

KEY:

- 1 Facing Brick, type Blockleys Stirling Grey
- 2 Through colour render, white
- 3 Aluminium doors and windows, polyester powder coated, colour dark grey
- 4 Aluminium copings polyester powder coated, colour dark grey
- 5 Entrance canopy in polyester powder coated aluminium
- 6 3m high weld mesh fence
- 7 Galvanized steel handrail guarding
- 8 External steel fire escape staircase
- 9 Roof monodraught ventilation unit

Rev	Description	Dn	Chk	Date
	Drawing Status			
	PRELIMINARY <input type="checkbox"/>			APPROVAL <input checked="" type="checkbox"/>
	INFORMATION <input type="checkbox"/>			TENDER <input type="checkbox"/>
				CONSTRUCTION <input type="checkbox"/>



Stockton-on-Tees
BOROUGH COUNCIL

Big plans, bright future

Economic Growth & Development Services
Director of Economic Growth & Development
Richard McQuinn B.Eng., C.Eng., F.I.C.E.
P.O. Box 228, Kingsway House, Billingham, TS23 2YL
Tel: 01642 393939, email: egds@stockton.gov.uk

Project
Northfield School & Sports College
Thames Road, Billingham
Year 7 School

Content
Proposed Elevations

Date	Drawn	Checked	Scale	Rev
July 2017	DA		1:100	
Dwg No.	A10787 - 107			
Scales @ A1				